

# It's all about your **Labels**

**The Future of Color Label Printing has Arrived!**



**Increase productivity and reduce costs with  
Epson® ColorWorks label printers.**

Epson ColorWorks solutions increase productivity, while reducing the cost of using pre-printed labels. Ideal for high-mix label requirements, ColorWorks solutions deliver dependable, commercial inkjet printing with fast-drying, durable color inks.

**FREE  
SHIPPING**

**FREE  
SUPPORT**

**Contact your Pacific Barcode Label Solutions Consultant for Details - or - Visit our Website.**

**Pacific Barcode Inc.**



**Label Printing Solutions**

**1-800-508-2535**

**[pacificbarcode.com](http://pacificbarcode.com)**

**[info@pacificbarcode.com](mailto:info@pacificbarcode.com)**

## Table of Contents

Matrix Remover/Epson C7500 .....	2
Unwinder/Rewinder Epson C7500 .....	2
Unwinder/Rewinder Epson C3500 .....	2
Unwinder/Rewinder Epson C831 .....	2
Color Inkjet Label Printers.....	3
Epson C7500/G/GE .....	3
Epson C3500 .....	3
Epson C6000/C6500 .....	4
VIP VP700 .....	5
VIP VP750 .....	5
VIP VP600 .....	6
Afinia L502.....	6
Afinia L901.....	6
DLP-2100 Digital Label Press .....	7
Virgo - Digital Finishing System .....	7
Printer Comparison Chart .....	8-9
Rewinders/Unwinders .....	10
Dispensers/Applicators.....	10
Thermal Printers .....	11
TSC .....	11
GoDEX .....	11
Zebra .....	11
Printronix .....	11
Label Printing Software .....	11
Thermal Transfer Ribbons .....	12
Thermal Printheads .....	12
Blank Labels .....	13
Inkjet Labels .....	13
Thermal Labels .....	13
Printed Labels .....	14
Online Ordering .....	14
Apparel Tags .....	14
Jewelry Labels .....	14
Full Color Labels .....	14
WarehouseSolutions .....	15
Mobile Carts .....	16
Control Cones .....	16
NuBeam Cover-Up .....	16
Retro Reflective Labels/Signs ...	17
Rack and Shelf Labels .....	17
Totem/Tree Labels .....	17
Keep Clear Labels .....	17
Floor Label Shield .....	17
Custom Warehouse Signs .....	18
Magnetic Labels .....	18
Cover-Up Labels .....	18
Warehouse Sign/Label Installation	19
About Pacific Barcode .....	20
LPNs .....	20

All materials in this catalog are protected by copyright by Pacific Barcode Inc or the Manufacturer, and may not be used without express written approval.  
© 2019 Pacific Barcode Inc.  
Design by Media Media Inc.,  
www.mediamediainc.com

# Order Color Label Printers, Ink, Supplies and Labels Online



**Stock Labels for VIP Color, Epson, Afinia, Memjet, Primera and More.  
Premium Materials, Fast Shipping, Order as Few as One Roll.**

## Order online and get Free Ground Shipping on Orders over \$250.00

### EPSON C7500 MATRIX REMOVER



**The ideal way to print and get a perfect full bleed label.**

By printing on die cut label rolls with the matrix intact, you can be assured that your labels are completely printed, edge-to-edge.

A quick and easy way to maximize your printing uptime.  
Electronic & mechanical features and external power supply 100/240VAC.

**Designed as an in-line option, the matrix remover for the Epson C7500 is an all-in-one system capable of removing the excess label material around each pre die cut label, and rewinding.**

#### Unwinder/Rewinder for Epson C7500 Printer



Units are equipped with adjustable core holder from 1.57" up to 4.64" (40-118mm).

The unwinder and rewriter for Epson C7500 printers are used to manage rolls of media up to an outside diameter of 10" (250mm).

#### Unwinder/Rewinder for Epson C3500 Printer



The unwinder and rewriter for Epson TM-C3500 printers are used to manage rolls of media up to an outside diameter of 10". Units are equipped with adjustable core holders from 1.57" up to 4.64".

#### Unwinder/Rewinder for Epson C831 Printer



The unwinder and rewriter for Epson C831 Inkjet Label Printer make it easy to unwind and rewind large quantities of labels. Capable of handling rolls up to 10" (250mm) diameter and up to 9.45" (240mm) wide, this unit improves manufacturing production speed and streamlines the label unwinding /rewinding process.

#### Optional Label Slitter for Epson C831 Printer



Run labels multiple-up and slit to desired width

# EPSON C7500GE The Epson ColorWorks Mini-Press

## Low Operational Cost!

Printhead and all parts covered under warranty.\*

\*excluding waste ink absorber

- ✓ **Precise Color Matching**
- ✓ **Total Color Control**
- ✓ **Smooth detailed color and shade gradations**
- ✓ **Flexible image manipulation and placement**
- ✓ **Incredible Color Output!**

The C7500GE, Graphics Edition combines the industry leading ColorWorks C7500G printer with powerful Wasatch CMYK raster image control to produce prime labels at high speeds. This speed and image control creates an ideal solution for end users and creative departments. This high productivity "mini press" offers a digital press at a fraction of the price. Short run jobs can now shift from being a hassle to being produced in minutes. For the end user, the simplicity and control enables in-house production of Type: Roll-fed or fan fold, die cut; single layer or adhesive labels on liner; plain paper, fine paper, PET film, synthetic

Thickness: 4.7 – 7.5mils (0.12 – 0.19mm)

Roll Size: 8.0" (204mm) max.

Core Diameter: 3" (76mm)

Roll-fed Width: 4.25" (50 – 108mm)

Sensors: Continuous, Gap,

Black Mark

Die-cut Label Gap: Min. 0.12" (3mm)

### Bundled Content

- ✓ **ColorWorks C7500G**
- ✓ **SoftRIP powerful raster image software**
- ✓ **Epson Preferred Limited Warranty with One Year On-site service**
- ✓ **Six months of Wasatch SoftRIP technical support**
- ✓ **Continuous media support**



## Epson Colorworks C7500G

- ✓ **Powerful Productivity** – Just in Time Color printing for high-volume labeling applications.
- ✓ **The ColorWorks C7500G inkjet label printer with UltraChrome DL Pigment-based inks, offers on-demand, full-color glossy label printing at speeds up to 11.8 inches/second.**
- ✓ **Built for reliable, high-quality performance, the C7500G is ideal for demanding, high-volume environments that require durable, glossy, customized labels at a low cost per label.**
- ✓ **PrecisionCore TFP® with Nozzle Verification Technology.**

## Epson Colorworks C7500

- ✓ **Durable Labels** – No smudge, no fade BS-5609 certification.
- ✓ **Low Cost of Labeling** – up to 50 percent lower printing cost than with laser and thermal transfer printers for high durability color labels.
- ✓ **Seamless Integration** – built-in ESC/Label language. you can use the printer with your existing workflow, and even add color with programming extensions.
- ✓ **Astounding Image Quality** – powered by PrecisionCore inkjet technology from Epson; delivers precise barcodes and ultra sharp text.

# EPSON C3500



**The Epson ColorWorks C3500 is a small footprint printer that will have you printing labels in minutes!**

With Epson's ColorWorks C3500 inkjet printer with Just In time Color™ label printing you can dramatically reduce label costs, increase operational efficiencies and quickly produce high- quality, durable labels in four colors (CMYK).

- ✓ **Ideal for high-mix, low-volume applications.**
- ✓ **Compact, robust design for commercial use.**
- ✓ **High print speed of up to 4 inches/second.**
- ✓ **High-quality four-color inkjet printing.**
- ✓ **Individual ink cartridges for efficient use of ink.**
- ✓ **Supports all major label applications.**
- ✓ **Easily adjusts to handle 1.2" to 4.4" widths.**
- ✓ **Rear-feed capability for fanfold and large rolls.**
- ✓ **Meets BS5609 certification for GHS labels.**





UDI (Unique Device Identification) requirements in the Medical Device Field have been changing at a rapid pace with the necessity of proper formatting, manufacturing and expiration dates, serialization, notification & warning symbols, barcodes and other components.

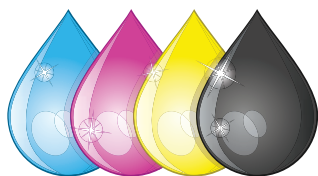
Overprinting pre-printed labels comes with its own challenges including maintaining inventory for dozens or hundreds of different labels, making sure that the correct label is pulled for the manufacturing line and proper alignment while printing.

## The Solution?

'Instantly printing labels on site' at lighting fast speeds.

Just In Time Label Printing in tandem with enterprise labeling software such as Nice Label, Teklynx or Bartender allows for centrally controlled label approval, design revisions and management while being able to locally print labels right on the manufacturing line.

## Pigment vs Dye Inks



Today's dye and pigment based inks are very high quality with some big differences. Dye based inks are color dye dissolved in liquid. The inks have a certain amount of waterfastness and are somewhat water resistant. Dye based inks are the most vibrant and brighter than pigment based inks and will, over time, fade when exposed to light.

Pigment based inks are solid particles of colorant suspended in the ink droplets in order to transfer the color from the printer to the paper. Pigment based inks are waterproof and will not fade. This makes it the perfect solution for GHS or chemical labels.

# ColorWorks CW-C6000 Series Inkjet Printers

The new Epson® ColorWorks series label printers, engineered for demanding applications, are revolutionizing both monochrome and color label printing with rugged reliability you can count on, delivering dependable, commercial inkjet printing with fast-drying, durable color inks and enhanced productivity.

## Introducing the Future of Mission-critical Label Printing.

**Reliability you can count on** — engineered by Epson for demanding applications; backed by industry-leading service and support.

**First printer specifically designed as a color upgrade to black-and-white thermal transfer printers<sup>1</sup>** — with similar media handling capabilities, speed, features and connectivity options, all at a comparable price point.<sup>2</sup>

**Enhanced Productivity** — eliminate the need to pre-print; speeds up to 5" per second<sup>3</sup>; fast time to first label.

**Astounding Image Quality** — up to 1200 dpi resolution with various droplet sizes; crisp images comparable to pre-printed labels.

**Seamless Integration** — compatible with ZPL II, major middleware, SAP, Windows®, Mac® and Linux.

**Remote Printer Management** — for managing large fleets over the network.

**Applicator I/O control port for truly automated workflow** — supports I/O commands; can be integrated into nearly any workflow.

**Low Cost** — comparable to existing thermal transfer printers.<sup>2</sup>

**Durable, High-Quality Labels** — meets BS 5609 certification.<sup>4</sup>



### High-Quality Printing

Epson-engineered PrecisionCore® TFP® printhead technology delivers ultra sharp text and precise barcodes. It also produces varying droplet sizes that, coupled with a 1200 x 1200 dpi resolution, can produce a huge gamut of vibrant, accurate colors, smooth gradations and fine image details.

So, whether the challenge is to produce complex informational labels or high-quality product labels, the CW-C6000 series is up to the challenge.



### ESC/Label and ZPL II Interface Languages

ZPL II capabilities allow you to experience the advantages of Epson inkjet technology without reprogramming existing systems. ESC/Label command extensions can be added to unlock the power of color. Leverage color for color-coded fields, product pictures, logos and marketing messages to improve overall business processes and brand image.



### Remote Management Tools

Epson made the CW-C6000 family for large-scale enterprise environments. To support these high-volume scenarios, a wide range of remote management tools are available. These allow IT and support teams to remotely monitor the status of large fleets of printers, generate email alerts on items needing attention, remotely deploy firmware updates, set up complex network environments, and view or modify settings from any computer browser or Android™ or Apple® powered smartphone.



### General-Purpose I/O Port

Designed for mission-critical production, all CW-C6000 family printers come equipped with a general-purpose I/O port. This gives automation developers all the control they need to seamlessly integrate the printer into their automated workflow. The port provides all the necessary information on supply levels, status, faults and readiness. Inputs enable users to pause, clean and print.

# EPSON

EXCEED YOUR VISION



## Peel-and-Present

Epson offers the first color inkjet printer with peel-and-present capability, which can help speed up the manual application of on-demand labels. An integrated label-taking sensor holds off subsequent printing until the previous label is removed. This feature is ideally suited for fully automated label application systems. This unique capability eliminates the need for a loose loop and allows individual labels to be taken as soon as they are printed.



## Auto Cutter

With a 4" or 8" built-in auto cutter covering the full spectrum of label sizes to create variable-length labels and enable easy job separation, these new ColorWorks models offer cost and inventory reductions compared to using pre-printed labels.

<sup>1</sup> The CW-C6000/C6500 family is the first to bring to market the combination of features of direct ZPL II printing, peel-and-present, remote printer management, companion four- and eight-inch models, applicator I/O interface, broad middleware support, and comparable price points. | <sup>2</sup> Printers and consumable costs are similar when comparing similarly featured leading brand thermal transfer printers and supplies for similar high durability images on similar media. | <sup>3</sup> Printing in MaxSpeed Mode, 300 x 600 dpi, 3.2" (89 mm) print width. | <sup>4</sup> ColorWorks CW-C6000/C6500 inkjet printers with UltraChrome DL pigment ink, used in combination with Neenah Kimdura™ poly media, has been BS 5609 certified. | <sup>5</sup> Compared to color inkjet label printers available in the U.S. and Canada as of July 2019.



Lorem Ipsum

- **High-impact Labels up to 8.5 inches wide.**
- **Up to 12 inches per Second (60 feet per minute).**
- **Print Resolution up to 1600 x 1600 dpi.**
- **Ideal for Custom or Private Brand Labeling needs.**
- **Unprecedented Flexibility and Convenience.**

**VIPColor VP7xx series of industrial color label printers just got better!**

Powered by  
**memjet®**

## VP700

The VP700 enables high impact, color labels up to 8.5 inches wide at a print speed of 6 ips or 12 ips (30 or 60 feet per minute) and with print resolutions of 1600 x 1600 dpi or 1600 x 800 dpi, respectively.

Perfect for printing on-demand and Just In Time (JIT) labeling requirements in manufacturing or logistic environments. The VP700 is also ideal for custom or private brand labeling needs and provides unprecedented flexibility and convenience to any company that owns one.

With a rugged steel construction, the VP700 comes standard with a built-in cutter, print-hold system, network connectivity, on board service web page for cost analysis and usage monitoring, and an integrated 8-inch label roll unwind with automatic media loading functionality for controlled, simple material handling.

The unit holds five 250ml color ink cartridges to easily manage large print runs with minimal operator intervention. Set up, operation and maintenance are simple. The fully loaded VP700 printer comes packaged with unwind, printhead, 1.25 liters of ink, driver and cables.

The VP700 runs with most common Windows software applications and label design software packages so there is no need to update or change your software.

## VP750

### Water Fast Color Labels that Look Awesome!

VP750 can print water fast color labels at a blazing speed of up to 12ips and at an image resolution as high as 1600dpi - the highest in the market.

Building on field proven technology, the VP750 combines the performance and reliability of our bestselling VP700 with Enhanced Water Resistance Ink Technology to produce vivid color labels and crisp text/barcodes that are suitable for Chilled Food & Beverages, Wineries, Animal Care, Chemicals, Cleaning products and most moisture exposed products. Compatible with synthetic and paper based inkjet coated label material.

#### PERFORMANCE

Print Speed: UP to 12 ips  
Print Resolution: Up to 1600 x 1600 dpi  
Data Connectivity: USB 2.0/Ethernet 10/100Base-T/GPIO  
Ink: Dye Ink in five individual 250 ml CYMCK color ink tanks  
Time to first label => 10 seconds

#### MEDIA HANDLING

Print Modes: 3: roll-roll, roll-cut, print-hold (non-peel)  
Label Media Width: 2" - 8.5"  
Max Label Length: 40" (Continuous/roll-roll)  
Label Media Thickness: 0.1-0.3 mm  
Qualified Label Stocks: Pacific Barcode  
Detection: Gap, continuous, black mark

#### ACCESSORIES & OTHERS

Built-in Accessories: Integrated unwinder. Built-in automatic cutter.  
Size: 18.7" (w) x 19.6" (h) x 23.0" (d)  
Weight: 77 lbs  
Warranty: 1 year limited factory warranty or 5m inches (whichever comes first)

- ✓ Medical Device Manufacturing
- ✓ BioMed/BioTech
- ✓ Private Labeling
- ✓ Vitamins/Nutraceuticals
- ✓ Consumer Goods
- ✓ Food/Beverages
- ✓ Candy/Snacks
- ✓ Healthcare
- ✓ Manufacturing
- ✓ Logistics





# VIP Color - VP600 - High Performance Flexible. Efficient. Affordable.



- ✓ **Print up to 8" per second.**
- ✓ **Accepts Wide Variety of Label Materials**
- ✓ **Low Price - High Value**

Engineered for high performance yet priced within the reach of most small-medium enterprises. Manufacturers struggling today with high pre-printed label costs and wastage linked with their wide product offerings will find the VP600 a must have printer.

#### GENERAL

Print Speed - 6 and 8 ips.  
Print Resolution - 1600x 1600 dpi and 1600 x 800 dpi.  
Print Width - 2" to 8.5"  
Inks - Five 200 ml CMYKK  
Time to First Label - Less than 10s

#### PRINTING

Print Modes - Roll/Cut, Roll/Roll, Print & Hold

#### MEDIA

Sensor Type - Gap, Black Mark, Continuous  
Media Types - Roll, Fanfold  
Roll Diameter - 6" OD/3" Core  
Supported Media - Glossy, Matte, Synthetics

#### OPERATION

Blacklit LCD control panel in 9 languages.  
LED for Printer warnings and readiness indication.  
Unobstructed accessibility to service bays for print head and ink tanks.  
Designed for ease of setup, troubleshooting and service.  
MS Windows based label and graphics design applications.  
External Unwinder for 6" OD roll.

## High Resolution Pigment and Dye Based Inks

## Afinia L502



**The L502** is the next evolution of our original popular mid-range L501 label printer. All-steel industrial design, improved toolbox functionality, over 2x faster printing, and optional durable pigment inks make the L502 extremely rugged and versatile.

The heavy-duty construction of the L502 color label printer includes an all-steel industrial cover, with a window for print bed visibility and status monitoring. Improved sensors allow for greater compatibility with specialty media, such as reflective metallic material. The L502's pigment inks have been tested and certified to produce BS 5609-compliant and GHS (Globally Harmonized System) labels, which helps keep chemical manufacturers in compliance with packaging and transportation requirements. Level of versatility no other printer in its class can offer.

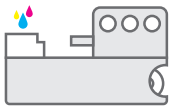
Print Technology: HP Thermal Inkjet  
Print Resolutions: Color: Up to 4800 dpi  
Print Speed: Approximately 5.2 in/sec (13.2cm/sec) printing a 2.2 in (56 mm) wide image in plain paper normal mode.  
Inks: Option of Dye or Pigment — Individual Cyan, Magenta, Yellow (26ml), Individual Black (78.4ml)  
Core Size 3" (76.2mm)  
Media Types: Compatible with wide range of paper, polyester, polypropylene, and vinyl label stocks.  
Supports gap, black mark, and continuous media.  
Media Sensing: Auto calibration and auto detection of gap and black marks.  
Label Width: 1.0" – 8.5" (38.1mm – 215.9mm)  
Label Length: 0.75" – 48" (19mm – 1219.2mm)  
Cutter: Powered cutter  
Unwinder: 8.5" (152.4mm) max width, 8" (152.4mm) OD on a 3" core (76.2mm)  
Warranty: 1 year

## Industrial Color Label Printer Designed for Inline Operation

## Afinia L901

- ✓ **Wide Range of Media Compatibility.**
- ✓ **Memjet Sirius Print Engine Designed for Inline Operation.**
- ✓ **Variable Data Capability at 12" per Second.**
- ✓ **Professional Print Quality - up to 1600 x 1600 dpi.**
- ✓ **Store and Easily Retrieve Print Files from Intuitive Touchscreen Interface.**

### Optimized for these inline uses:



Presses/Finishers



Roll to Roll



Print & Apply

Print Method: Memjet Waterfall Printhead Technology® 11 Integrated Circuit (IC) Chips – 70,400 nozzles

Ink Type: Dye

Print Resolution: 1600 x 1600 dpi or 1600 x 800 dpi

Print Speed: 6 inches (152 mm) per second to 12 inches (305 mm) per second

Print Width: 8.5 inches (216 mm)

Media Types: compatible with a wide range of paper, polyester, polypropylene, and vinyl label stocks

Media Width: 2"-8.5" (50.8 mm-216 mm)

Thickness: Minimum 0.005" (0.13 mm) Maximum 0.01" (0.3 mm, including liner)

Core Diameter: Requires 3" (76.2 mm) cardboard core

Media Sensors: Gap, continuous, black mark

Die-Cut Label Gap: Minimum 0.125" (3.0 mm) Maximum 0.3" (8.0 mm)

Black Mark Size: (3 mm wide, 25.4 mm long on left)



The L901 enables companies to run a full-color digital label printer in line with a finishing or application system without complications related to mid-job printhead maintenance.

This industrial digital label printer can produce full-color prints with stunning image quality at speeds of up to 12 inches per second. Photo-quality images and exceptionally-crisp text and barcodes are printed at up to 1600x1600 DPI via Memjet's Sirius print engine.

Five high-capacity 250mL ink cartridges (CYMKK) offer an extremely low ink cost per label.

# DLP-2100 DIGITAL LABEL PRESS

**Fast & affordable flexible steel dies**  
**Very fast print and finishing (12 IPS)**  
**Memjet-powered L901 included**  
**Best for custom, repeat jobs, blank labels**



## Print and Finish Labels Inline

The DLP-2100 can print, die cut, and finish labels at up to 60 feet per minute, making it the fastest and most advanced digital label press in its class.

This full-featured workhorse is capable of laminating, die cutting, waste removal, slitting, and rewinding to finished rolls that are ready for application.

## High-Capacity Finishing

The DLP-2100 is able to accommodate a massive roll of material (17.3 in/440 mm outside diameter), which drastically reduces stock cost from converters, and greatly simplifies operation by avoiding frequent roll changeovers.

A re-registering magnetic cylinder uses easily-swappable flexible steel dies that are low in cost and can be created quickly. These dies, combined with servo-controlled motors, allow for pinpoint cutting accuracy at high speeds, even with perforations. In addition to inline print applications, the DLP-2100 can be used to convert blank labels.

## High Output for Large Brands and Print Shops

With the L901 Digital Label Printer inline, the DLP-2100 can produce more than 25,000 full-color 3×4-inch labels per hour. For larger brands, this makes it ideal for bringing label production in house. Print shops can offload their smaller label runs, freeing up large format presses while reducing costs and setup times. Eliminating the need to outsource labels results in faster turnaround times, greater control and flexibility, and thousands of dollars saved.

- ✓ **Volume: High Production**
- ✓ **Ink Cost/Label: Extremely Low**
- ✓ **Finishing Speed: 30–60 ft/min**
- ✓ **Max Print Width: 8.5 Inches**
- ✓ **Max Roll Diameter: 17.3 Inches**

# Virgo - DESKTOP DIGITAL LABEL FINISHING SYSTEM

Virgo is a compact desktop finishing system that unwinds, laminates labels for durability, digitally die cuts, removes excess label material around each die-cut shape, slits, and rewinds offering you everything to professionally cut and finish labels.

The system provides a very accurate label finishing solution using cutting plotter technology with reduced dimensions. This allows you to cut different types of materials and shapes on the fly without the added cost of dies. The unit is also equipped with a cutter management tool that works in tandem with a camera, forming an integrated optical black-mark registration system which provides cutting speed optimization and avoids synchronization issues. The Virgo's core features offer the user full flexibility and limitless variations in label design with a smooth workflow. The Virgo digital label finisher is truly the perfect on-demand short run label finishing solution for those using digital color label printers and presses.



## SOME BENEFITS OF USING VIRGO: »

- ✓ Short run in-house label production reducing cost and inventory requirements.
- ✓ Producing full bleed labels will no longer be a nightmare.
- ✓ Laminating option for labels for added durability (no need for special media).
- ✓ No need to order pre-die cut label rolls.
- ✓ Desktop Size Unit.
- ✓ No need to set up a minimum gap between labels when printing in full bleed (Saves media).

# Printer Comparison



	Epson 3500	Epson 7500	Epson 7500G	Epson C7500GE	Epson C6000A/ C6000P
Print Speed	Up to 4.0 ips	11.8 ips	11.8 ips	11.8 ips	Up to 5.8 ips
DPI	Up to 720 x 360 dpi	1200 x 600 dpi	1200 x 600 dpi	1200 x 600 dpi	Up to 1200 x 1200 dpi
Print Modes	Quality/Speed	11.8 ips/5.9 ips	11.8 ips/5.9 ips	11.8 ips/5.9 ips	Max/Speed/Normal/ Quality/ Max Quality
Media Handling	Roll 1.2" - 4.25" Fanfold 2" - 4.25	Roll/Fanfold 1.97" - 4.41"	Roll/Fanfold 1.97" - 4.41"	Roll/Fanfold 1.97" - 4.41"	Roll/Fanfold 1.0" - 4.4"
Roll Size	4" OD 1.75 Core	8" OD - 3" Core	8" OD - 3" Core	8" OD - 3" Core	8" OD - 3" Core
Print Width	4.1"	4.25"	4.25"	4.25"	4.4"
Continuous	✓	✓	✓	✓	✓
Rolls	✓	✓	✓	✓	✓
Fan Fold	✓	✓	✓	✓	✓
Matte Paper	✓	✓	✓	✓	✓
High Gloss Paper	✓	X	✓	✓	✓
Synthetic Material	✓	✓	✓	✓	✓
Sythetic Poly Gloss	✓	X	✓	✓	✓
Print and Present	Print and Cut	Print and Cut	Print and Cut	Print and Cut	C6500P (Peel and Present)
Cutter	✓	✓	✓	✓	C6500A
SB 5609 Compliant	✓	✓	X	X	w/ Matte Poly
Color System	CMYK	CMYK	Ultra Chrome DL CMYK	Ultra Chrome DL CMYK	Ultra Chrome DL CMYK
Ink Type	PIGMENT	PIGMENT	PIGMENT	PIGMENT	PIGMENT
Color Management Software	✓	X	X	INCLUDED	ICC Profile Support Spot Color Matching
Printhead	MICRO PIEZO	Precision Core TFP (Micro Piezo)	Precision Core TFP (Micro Piezo)	Precision Core TFP (Micro Piezo)	Precision Core TFP (Micro Piezo)
Printhead Cost	N/A	N/A	N/A	N/A	N/A
Printhead Life	Life of Printer	Life of Printer	Life of Printer	Life of Printer	Life of Printer
Connectivity	USB/Ethernet	USB/Ethernet	USB/Ethernet	USB/Ethernet	USB/Ethernet
Warranty	1-Year Depot incl. Extended Depot and 'Spare in the Air' available.	1-Year Depot incl. Extended Depot and On- Site Warranty available.	1-Year Depot incl. Extended Depot and On- Site Warranty available.	1-Year On-Site incl. Extended On-Site Warranty available.	1-Year Depot incl. Extended Depot, On-Site Warranty and 'Spare in the Air' available.



# Printer Comparison

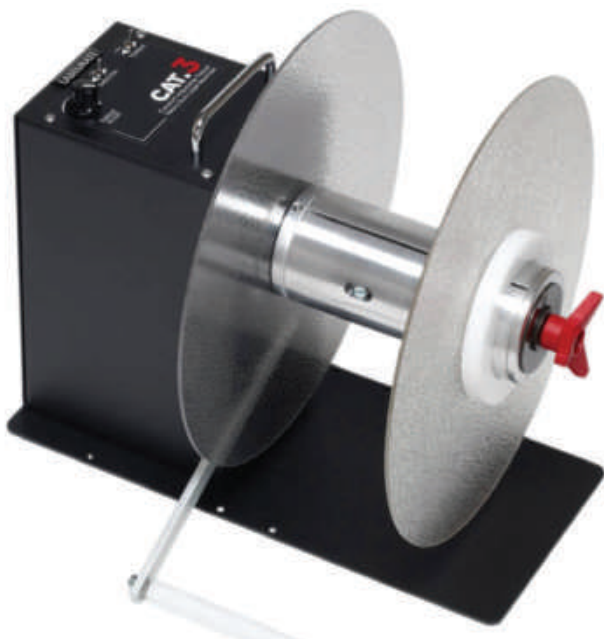


Epson C6500A/ C6500P	VP700	VP750	VP600	Afinia L502	Afinia L901
Up to 5.8 ips	6ips/ 12 ips	6ips/ 12 ips	6ips/ 8 ips	Up to 5.2 ips	Variable 6-12 ips
Up to 1200 x 1200 dpi	Up to 1600 x 1600 dpi	Up to 1600 x 1600 dpi	Up to 1600 x 1600 dpi	Up to 4800 dpi	Up to 1600 x 1600 dpi
Max/Speed/Normal/ Quality/ Max Quality	High/ Fine	High/ Fine	High/ Fine	Normal/Better/ Best	High - Fine (Variable)
Roll/ Fanfold 1.0" - 8.5"	2" - 8.5"	2" - 8.5"	2" - 8.5"	1.5 - 8.65"	2" - 8.5"
6" OD - 3" Core	8" OD - 3" Core	8" OD - 3" Core	6" OD - 3" Core	8" OD - 3" Core	8" OD - 3" Core
8.34"	2" - 8.5"	2" - 8.5"	2" - 8.5"	1.5 - 8.5"	2" - 8.5"
✓	✓	✓	✓	✓	✓
✓	✓	✓	✓	✓	✓
✓	OPTION	OPTION	✓	✓	X
✓	✓	✓	✓	✓	✓
✓	✓	✓	✓	✓	✓
✓	✓	✓	✓	✓	✓
✓	✓	✓	✓	✓	✓
C6000P (Peel and Present)	✓	✓	✓	Print and Cut	X
C6000A	✓	✓	✓	✓	✓
w/ Matte Poly	X	X	X	(Not yet rated - pigment)	X
Ultra Chrome DL CMYK	CMYKK	CMYKK	CMYKK	CMYK	CMYKK
PIGMENT	DYE	WATER RESISTANT DYE	DYE	PIGMENT/DYE OPTIONS	WATER RESISTANT DYE
ICC Profile Support Spot Color Matching	AVAILABLE	AVAILABLE	AVAILABLE	X	AVAILABLE
Precision Core TFP (Micro Piezo)	MEMJET	MEMJET	MEMJET	HP Thermal Inkjet	MEMJET
N/A	\$420	\$400	\$400	\$295.00 Comes with a full set of inks.	\$395
Life of Printer	Up to 50,000,000 Injections per Nozzle	Up to 50,000,000 Injections per Nozzle	Up to 50,000,000 Injections per Nozzle	Not Rated	Up to 50,000,000 Injections per Nozzle
USB/Ethernet	USB/Ethernet	USB/Ethernet	USB/Ethernet	USB/Ethernet	USB/Ethernet
1-Year Depot incl. Extended Depot, On-Site Warranty and 'Spare in the Air' available.	1-Year Limited Warranty or 5 Million Inches, whichever comes first.	1-Year Limited Warranty or 5 Million Inches, whichever comes first.	1-Year Limited Warranty or 5 Million Inches, whichever comes first.	1-Year Limited Warranty	1-Year Limited Warranty

# REWINDERS/UNWINDERS

**Rewinders are efficient time savers that rewind material into clean and uniform rolls.**

**Choose from a variety of Rewinders/Unwinders to assist in feeding material, rolling material, and unwinding rolls.**



Label Rewinders wind up labels into a roll as they come out of a printer. If you don't use a Rewinder, you have to gather up the labels by hand once the printing job is finished. A Rewinder is much more convenient and saves you time.

"CAT" (Constant Adjustable Torque™) has made these quiet, easy-to-use Rewinders the Industry Standard. With various core sizes, label widths, roll diameters and options to choose from there is a Rewinder to fit any job you may have.

With an unmatched 5-Year Parts and Labor Limited Warranty, our rewinders are designed for worry-free 24/7 operation. Rewinders are easy to set up and silent in operation.

# DISPENSERS/APPLICATORS



Pacific Barcode is your source for Dispensers and Applicators ranging from simple hand held applicators to automatic table top Bottle and Cylindrical Containers.

If you are looking for a simple and versatile solution for applying labels to bottles, cans, jars or other cylindrical containers but you don't want to spend a fortune, look no further!

Pacific Barcode is your complete Label Solutions partner.



**CAT-3**

Fin-style adjustable core holder for varying core sizes.



**CAT-3SA**

Helps eliminate inkjet banding and inkjet registration problems.



**MINI-CAT**

Low Cost, Small Size Label Rewinders for 1-4" Core or Coreless.



**CAT-3L**

When material needs to make several passes through the printer.



**CAT-40G**

Power House with a gear driven motor, high torque power supply.



**Reel-to-Reel**

Easily change rewind direction of material, change core sizes, and visually inspect labels.

# Shoes and Apparel

69903  
Pacific Coast Shoes  
Women's Black Pump  
Size 9M - Red  
Made in USA  
100% leather upper and sole  
4" High Heel Pump

**Go from this...**

**...to this.**



**According to KISSmetrics, 93% of consumers consider visual appearance and color above all other factors when shopping.**

**85% of shoppers place color as the primary reason for why they buy a particular product.**

With the number of products being added daily, getting the customer to notice your product is more critical than ever.

Use color to speed visual search. Whether you are color coding your labels to aid your shipping department to easily locate the correct box or carton or you are guiding the retail consumer to choose your product over your competition, color makes it easier to choose your product.

Pacific Barcode Label Printing Solutions can work with you every step of the way. Whether you want to have Pacific Barcode print your labels or bring Label Printing in-house giving you a highly effective way of printing labels on-demand, Pacific Barcode has a solution.

By bringing your label printing in-house, you can print these labels in a variety of sizes in run lengths as low as one or in the thousands. Fast...and when you need them. With multiple printers, you can have one at the end of each production line allowing for a cost-effective production model. Pacific Barcode's Pigment Based and Die-based Inkjet technologies will give you a very inexpensive label solution that will not discolor, fade or deteriorate through production or consumer handling.

# THERMAL PRINTERS



Partner Network

TSC Auto-ID Technology is an emerging leader in the production of innovative, competitively priced thermal barcode label printers. They have used over-20 years of development and manufacturing experience to design and bring to market a wide range of thermal label printers – everything from budget-friendly entry-level printers to high-performance platforms and portable, mobile-labeling devices. TSC's ISO9001 certified products are known for their rugged, dependable construction and ease of use – two signature features praised by customers worldwide.



GoDEX builds printers to last. Their desktop printers are heavier, have more powerful motors, and have more metal components in them than the others for one reason; reliability. Quality is the #1 priority at GoDEX. They are an ISO 9001 and ISO 14001 Certified manufacturer and they have met the quality standards of many world-class Fortune 500 companies around the globe. GoDEX backs up their quality program with the longest and most comprehensive product warranties.

**Choosing the right Thermal Printer can be challenging with the hundreds of different models on the market.**

**Depending on your application, label longevity requirements, label width, number of labels per day, size of barcodes, graphics, text, operating environment, and budget, Pacific Barcode can help you determine which printers will be absolutely right for your business.**



**ZEBRA**



Zebra's Visible Value Chain solution for inventory and finished goods tracking provides the detailed information needed by manufacturers, distributors and service companies. This visibility lets you know in real time the arrival, dwell and departure times for every asset throughout the off-line and finished goods processes, and creates a complete history for each asset. See new value for your continuous improvement practices.



#### **Solutions that Optimize Operations and Increase Efficiency**

Customized solutions to meet your unique challenges- that's our core competency. With tracking and management, compliance labeling, quality control, shipping and receiving, and everything else in between, Pacific Barcode and Printronix Auto-ID helps customers across the globe. Find the Printronix-Auto ID solution that is the right fit for you.

#### **Compliance Labeling**

With Printronix Auto-ID products you can easily overcome failure to produce compliant labels that cause fines/chargebacks, condemned or returned goods, and eventually customer loss. Our proven compliance labeling and validation solutions print labels that are inclusive of different barcode symbologies, layouts and content to ensure compliance with regulatory and customer requirements.



## Label Printing Software

Pacific Barcode is your #1 source for all of your label printing needs including barcode and label printing software. Whether you need a simple program to create labels or you are looking for a complete automation solution, Pacific Barcode Label Printing Solutions can work with you every step of the way to make sure that everything works together.

**NiceLabel**

The all-new NiceLabel suite of products is a completely updated product line, based on 25 years of industry experience and built on the most modern technology available today. The new product line provides NiceLabel customers with unmatched print productivity through next-generation technology.



The world's most trusted software for creating and automating labels, barcodes and more, now with new tools for integration, administration, data entry and browser-based printing

#### **Labeling and Barcode Software That Grows with Your Business**

BarTender's four editions enable you to easily upgrade your system as your business grows, without the extra cost and complexity of buying add-on products.

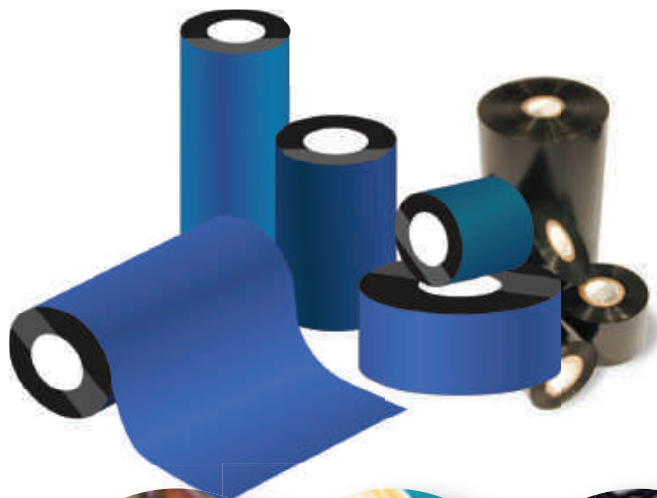


TEKLYNX product identification software products offer powerful, easy to use barcode label software solutions for enterprise-wide and standalone applications. Our barcode label software packages provide advanced features for diverse label stock, including thermal labels and thermal transfer labels, to uniquely identify fonts and products in a wide range of application systems in virtually any industry.

**Try it before you buy it;  
Ask about a free unrestricted  
software demo.**



# THERMAL TRANSFER RIBBONS



From automotive and chemicals to retail and security, whatever your needs, Pacific Barcode Label Printing Solutions has the Thermal Transfer Ribbon for the job.

We have ribbons for all printers, environments and materials. Abrasion, heat, solvents? No problem! Whatever your application, we have a TTR solution for you.

- |                   |                         |
|-------------------|-------------------------|
| ✓ Automotive      | ✓ Health & Beauty       |
| ✓ Chemicals       | ✓ Inventory & Logistics |
| ✓ Compliance      | ✓ Outdoor               |
| ✓ Electronics     | ✓ Pharmaceutical        |
| ✓ Food & Beverage | ✓ Retail                |



## Need Ribbons for Flexible Packaging Substrates?

- Exceptional Printing Quality
- Long Ribbon Lengths and Fast Print Speeds
- OEM Compatibility in Black, White, Silver and other Colors

### Wax Formulation Category Characteristics

- Contains Highest Percentage of Wax
- Lowest Melt Points
- Requires Least Amount of Heat for Printing
- Prints at Lowest Print Energy/Settings
- Least Durable
- Prints Best on Paper and Low-End Synthetics

### Wax/Resin Formulation Category Characteristics

- Contains Higher Percentage of Resin than Wax Formulation
- Increased Heat Resistance
- Requires More Heat for Printing
- Requires Higher Print Energy Settings
- More Durable
- Prints Well on Papers and Low-End Synthetics

### Resin Formulation Category Characteristics

- Contains Highest Percentage of Resin
- Requires the Most Heat for Printing
- Requires the Highest Print Energy Settings
- Most durable
- Prints Best on Synthetic and High-End Films

**Pacific Barcode is your resource for high quality thermal transfer ribbons**

## Thermal Printheads



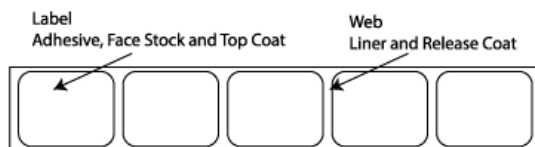
**Pacific Barcode provides Name Brand, Genuine OEM Brand and OEM Equivalent printheads. With hundreds of available printheads, we can be your complete solution for all of your Thermal Printer needs.**

- |                       |            |            |
|-----------------------|------------|------------|
| • Automated Packaging | • Encore   | • Miltrope |
| • Autotote            | • Fujitsu  | • Monarch  |
| • Avery Berkel        | • Godex    | • Norwood  |
| • Axiohm              | • IBM      | • NCR      |
| • Bizerba             | • IER      | • Sato     |
| • Brady               | • Intermec | • TSC      |
| • Comtech             | • Italora  | • Videojet |
| • Datamax/Fargo       | • Markhem  | • Zebra    |

There are several important components when having preprinted or blank labels manufactured and printed ranging from cost, longevity and sustainability to performance and design.

## PRESSURE SENSITIVE LABELS

Pressure Sensitive Labels are on everything around us, and although they seem very simple, there are a variety of very important aspects to the label.



Labels are layered materials consisting of the Liner, the Release Coat, Adhesive, Face Stock and the Top Coat

### 1. LINER

The liner is the backing paper that houses all of the labels.

### 2. RELEASE COAT

Coating that helps to keep labels from sticking to the liner.

### 3. LABEL ADHESIVES

Pressure Sensitive Adhesives (PSAs) are adhesives that will bond to another surface with little or no pressure or energy. Firm pressure is all that is needed to create a bond between the PSA and the surface of the material that will house the label. This makes these a perfect solution for labels.

#### Adhesive Types:

**Repositionable:** Adhesive that adheres immediately, however, the label can be removed cleanly from the container and another one can be applied in its place.

**Removable:** Adhesive that can be easily removed without damage to the label or the substrate.

**Permanent:** Hard to remove adhesive and will cause destruction of the label if removed.

### 4. FACE STOCK (MATERIAL)

#### Paper Labels

Most applications may be printed on Paper Labels. These are the most common and are used for a variety of applications. These are perfect for clean and dry environments.

#### Polypropylene Labels

These are great for indoor use when you need something stronger than paper labels. Typically 3-mil thick, this plastic film has a very aggressive adhesive backing and is temperature resistant to 175 degrees F. This is a permanent indoor labeling solution.

#### Synthetic Materials

For more demanding applications including GHS labels, nursery applications, sewn in tags, etc. These labels offer high resistance to chemicals and UV exposure.

#### Destructive Vinyl

Used for security labels, the attempt to remove this label will destroy the label. The fragile nature of the facestock and the ultra-strong adhesive, removing these labels will cause the label to break into very small pieces.

#### Metalized Polyester

This is a 2-mil, matte silver label offering heat and chemical resistance.

### 5. TOP COAT

The top coat is a coating or lamination that is applied to the face stock to provide protection from abrasions, moisture, wear and tear, etc.

**Pacific Barcode features Premium Label Stock because your labels are that important!**



## Ink Jet Labels

Pacific Barcode is an in-house manufacturer of blank labels for all ink-jet printers.

- ✓ **Epson C7500G**
- ✓ **Epson C7500 (Matte)**
- ✓ **Epson C3500**
- ✓ **Epson C831**
- ✓ **VIP Color - VP700**
- ✓ **VIP Color - VP485**
- ✓ **VIP Color - VP495**
- ✓ **Affinia**
- ✓ **Neuralabel**
- ✓ **Kiara**
- ✓ **Memjet Inkjet Printers**
- ✓ **...and more**

**Need a custom shaped label? This is our specialty!**

## Thermal Labels



- ✓ **Premium and Economy Labels**
- ✓ **Thermal Transfer & Direct Thermal Labels and Tags**
- ✓ **Variety of Materials for all Environmental Needs**
- ✓ **Adhesive Options to Ensure Your Labels Stick**
- ✓ **White and a Variety of Color Options**
- ✓ **Fanfold or Variety of Core and Outer Dimensions for any Printer or External Feed**

### APPLICATION

Knowing what you will be using the labels for will give us the ability to understand your needs. Are these going on a warehouse rack or shelf? Are these for retail products? Are these going on bags, boxes or bottles? Are these going on medical devices, are they GHS labels, product labels, etc...knowing your application will get us thinking about solutions that we can propose to you.

# Order Printed Labels Online



## Ordering Printed Labels just got easier.

You can order up to 30,000 printed labels online, or request a quote for all of your other label and tag needs. UPC and FNSKU labels are shipped within 1 business day (Monday through Friday).



Choose from UPC, GTIN14, FNSKU, Sequential Barcodes, LPNs, etc.

Enter your desired Quantity, Data, and Headers/Footers.

View your online proof and approve when correct.

Choose from a variety of USPS or Fed-ex options.

Pay for your order and your labels will ship in 1 Business Day.

## We produce and ship in One Business Day!

**Don't see the label size or label type online? Give us a call and we will take your order over the phone or by email.**

### Preprinted Apparel Tags

Preprinted Apparel Tags can be used for all types of soft goods such as hats, caps, clothing, and towels.

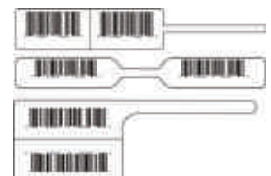
These are available in a variety of sizes and configurations and can have a perforation above the pricing portion of the tag which makes this ideal for gift giving.



### Jewelry Labels

The best way to display your jewelry prices, perfect for rings, watches, necklaces and bracelets.

These are available in multiple styles including Barbell, Horizontal and Vertical Rat Tail Labels.



### Full Color Labels

Pacific Barcode has a complete suite of solutions for your full color preprinted labels. These labels are fast, affordable and require no capital investment toward equipment in your facility. Available in a variety of stock sizes and custom converted shapes, Pacific Barcode can work with you every step of the way.

On-demand label printing gives you the ability to make each label different allowing you to print serial numbers, barcodes, product version and sell-by dates and gives you complete flexibility to personalize by label or batch with full flexibility to change content as your needs change.





# Warehouse & Logistics Labels and Signs

27

26

25

24

- ✓ Long Range Labels and Signs
- ✓ Floor Labels
- ✓ Custom Warehouse Signs
- ✓ Rack and Shelf Signs
- ✓ Cover Up Labels
- ✓ Totem and Tree Labels
- ✓ Magnetic Labels
- ✓ Warehouse Sign/  
Label Installation

**Pacific Barcode Inc.**



**Label Printing Solutions**

1-800-508-2535

[pacificbarcode.com](http://pacificbarcode.com)

[info@pacificbarcode.com](mailto:info@pacificbarcode.com)



# MOBILE CARTS



## A Warehouse "Game Changer"!

**Improve speed, capacity, infrastructure costs and employee productivity with Mobile Powered Workstations.**

Converting a stationary workplace to a mobile one is the easiest, most economical way to increase the productivity of your current workers and infrastructure. Newcastle Systems Mobile Workplace and Portable Power Systems let you take your workstations wherever they are needed.

### Increasing Productivity

Our Mobile Workplace System means you can process the same transactions with fewer pieces of equipment (i.e. printers, computers, etc.) by converting to mobile workstations.

### Instant Gratification

Quickly obtain measurable productivity gains without months of planning and implementation. Workstations are delivered and can be on the floor the same day.

### Improving Processes

The Portable Power System allows you to fully leverage your wireless facility by cutting the power cords and letting your workstations move to where they are needed – with your people.

### Enabling People

Operators and managers now have access to data and real-time information anywhere in the facility because they can take their workstation with them.

Mobile workstations easily integrate with your existing hardware and software systems, eliminating the need for additional investment or equipment purchases or, Pacific Barcode can supply a full solution including printers and scanners.

# Control Cones



Grey

Green

Blue

Red

**Ideal for areas where it is difficult to hang or view signage.**

Pacific Barcode's Control Cones can be used in a variety of ways.

1. Retro Reflective Barcode Labels for long range scanning in lieu of hanging signs
2. Add Days of Week, Letters, Numbers and/or barcodes for easy identification of special shipping instruction, process control, inspection quarantine, testing, non-conforming products, etc.
3. Easily identify pallets or warehouse areas.

Control Cones are available in Grey, Green, Blue and Red.

Retro Reflective Labels and Decals are available in a variety of colors. These Control Cones provide complete 360 degree visibility.

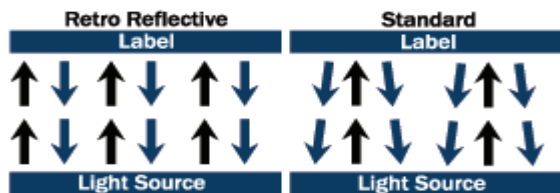
## NuBeam™ from Pacific Barcode



**Make Pallet Rack Beams Look New Again.  
Cover up Old Labels  
Quickly and Effectively.**

- ✓ 100% Opaque with metalized backing. No 'see through' of old labels.
- ✓ Over lamination makes these abrasion, moisture and solvent resistant.
- ✓ Available in a variety of widths and lengths.
- ✓ Provided in Rolls for ease of application.
- ✓ Exact Color Matching for your beams.

# RETRO REFLECTIVE LABELS/SIGNS



Retro reflective material has the ability to return light directly to the source. These retro reflective labels have a layer of microscopic glass beads allowing for the light to directly bounce back to the scanner. This means quick and effective barcode scans for your team.

Regular labels will reflect light to a degree, however, Pacific Barcode's Poly Retro Reflective Label Stock has an extremely high reflectivity value allowing you to scan up to 50 feet away even in low light conditions.

These durable poly labels are industrial grade and coupled with a layer of industrial grade adhesive, can withstand the harshest warehouse temperature environments with a service temperature range of -40 degrees F to +300 degrees

For more durability we can provide laminated versions that are highly resistant to scratching, chemicals and moisture.

Pacific Barcode can provide labels in a variety of sizes and colors or add them to signs for flat, angled or double sided triangle hanging signs.

## Rack and Shelf Labels



### Labels Manufactured and Printed to Your Specifications

- ✓ Paper, Poly and Vinyl Materials
- ✓ Mono and Color Capabilities
- ✓ No Fade - Highly Durable Labels
- ✓ High Quality - On Time Delivery!

Laminated Shelf and Rack Labels are virtually indestructible against dirt, grime, cleaners, and day to day wear and tear. These fully customizable labels are designed to your specifications including colors, arrows, location IDs, etc.

### Keep Clear Labels



Pacific Barcode's Keep Clear Labels are printed red text on Caution Yellow.

These labels are heavy duty and are printed on a Gloss Poly Label with 1 mil PET lamination.

## TOTEM/TREE LABELS



### For Confusion Free Environments

Totem, Stacked or Tree-Labels help to create a confusion-free environment and eliminate the need for long-range scanning by referring the picker to the correct level of the pallet rack without the use of a long range scanner.

These labels allow for the use of vertical posts throughout a warehouse. These stacked labels or signs can be helpful directional signs with or without barcode symbologies. Each level is typically color coded to the shelf/rack locations making for seamless integration.

## Floor Label Shield



**Protection against day-to-day operations including foot traffic, light-to-medium pallet jack and fork lift activity.**

**Save time and hassle from drilling into your warehouse floor to affix floor label kits throughout your warehouse.**

It all starts with our floor labels with an extreme Ultra Aggressive Adhesive. After this highly durable label is applied to your warehouse floor, the Warehouse FLOOR LABEL SHIELD™ is applied over the label. In tandem, you have water, scuff and equipment resistant labels that will hold up under most conditions including foot traffic and light to medium pallet and forklift activity. Labels are available in single color, full color, standard and retro-reflective materials.

The Warehouse FLOOR LABEL SHIELD™ is made of a heavy-duty clear vinyl with tapered edges that won't lift against heavy contact and equipment.



# CUSTOM WAREHOUSE SIGNS

**Custom warehouse signs are used to provide product locations, warnings, directions and safety messages.**

Choose from a variety of options including polyester, vinyl & mono and color capabilities resulting in a cost effective, highly-visible solution for your warehouse or retail needs.

- ✓ **No-Fade - Highly Durable Materials**
- ✓ **Signage can be White or a Variety of Stock Colors**
- ✓ **Long Range Retro Reflective Barcodes Available**
- ✓ **Flat, Angled, Triangular or Cubed**
- ✓ **Affordable Installation Available**

**012A3405**



**Angled  
Hanging Signs**

**Flat Signs  
Ideal for mounting  
to any surface**

**A01**



**V-Hanging Sign**

**Triangular Hanging  
Sign**



**4-Sided Hanging  
Sign**



**End of Aisle  
V - Shaped**

**End of Aisle - 90 Degree**



## Magnetic Labels



These are a great solution for temporary locations or where products will shift from one area to another. Magnetic Labels allow you to quickly move or reposition labels when and as-needed with easy to relocate

magnets. Although the majority of our clients are able to use one of our stock sizes, we have the ability to provide custom sizes.

Laminated Poly Labels on a heavy-duty magnet make sure that both the label and the magnet stay-put.

Use your existing product location coding system and provide data to us including barcode format, SKU or human-readable data. Labels can be printed in a variety of sizes and text/image colors. Order one or thousands, no minimum quantities.

## Cover-Up Labels



**Regular Label material, when placed over existing printed labels is not opaque enough to cover over existing label printing.**

**Pacific Barcode's High Grade Metalized Cover-Up Labels are 100% Opaque.**



**Easy to apply, these labels are available as printed or blank labels on rolls in a variety of sizes.**

**Call your Pacific Barcode Warehouse Specialist for additional details and pricing.**



Warehouse Label Installation can be a major pain!

One label placed incorrectly and the entire row might be wrong!!

Our Label Installation Team operates across the country and with over 750,000 hours of manufacturing and installation, and has the experience and know-how to make sure that your warehouse installation is 100% accurate and on-time. The last thing you want is for your labels and signage to not be installed before you go-live.

Whether you are labeling a working facility or are building out a new Distribution Center, Pacific Barcode will work with you every step of the way, before and after the installation.

If required, to not hamper your work-flow, we can schedule our team to work nights and on week-ends so you can continue to work distraction free.

The Pacific Barcode Installation Team is fully trained and has the experience to complete your installation efficiently, correctly and on time. Our staff will work with you toward the goal of 100% success; starting with consulting services, data file management and creation, complete planning and layout services, and turn-key complete installation service.

### Sign Installation

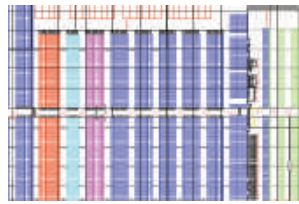
Need Long Range Scanning Bulk Storage Signs? Our installation team is ready to hang your signs to ensure the perfect placement and distance for your scanning equipment. We are Warehouse Sign Experts, whether it's End of Aisle Signs, Dock Door Signs, Shelf Row Signs or custom signage, we can help you work through this process.

### Label Installation

Our motto is "Do it Right and Do it On Time!"

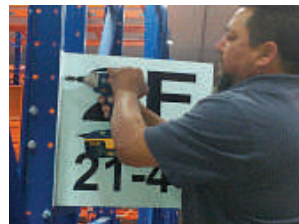
Our installation approach is scientifically formulated and analyzed to assure that the installation process is the most efficient possible. With Pacific Barcode, your labels are installed both quickly and accurately.

### From Concept to Installation



- ✓ We work with you every step of the way.
- ✓ From your plans to manufacturing and install.
- ✓ Fast Quotes

### Installation Experts



- ✓ 750,000+ hours of installation experience.
- ✓ Sign and Label Removal
- ✓ No Job too large...or small ...or too far away.

### 100% Accurate and On-Time



- ✓ Our Motto: "Do it Right...Do it On-Time!"
- ✓ Flexible Scheduling to meet your needs.

### Aisle and End of Rack Signs



- ✓ Increase efficiency and visibility.
- ✓ Variety of configurations to enhance your workflow.

### Long Range Reflective Signs



- ✓ Designed for long distance scanning up to 50' or further.
- ✓ Can be mounted or suspended.

### Rack Labels



- ✓ Durable and long lasting shelf edge labels.
- ✓ Combine logos, arrows, barcode symbologies and alphanumerics.

# Pacific Barcode Inc.



## Label Printing Solutions



Pacific Barcode is committed to providing the best labeling solutions for our customers.

As a true value-added reseller and an Innovative Solutions Provider, we have a multitude of solutions ranging from providing label printing

equipment, blank labels, consumables, maintenance, service and support where you have complete control of your label printing process.

For those who would rather outsource your label printing, Pacific Barcode's Print Production Facility can produce everything from printed barcode labels to extremely complex labeling requirements.

### Warehouse and Logistics signs and labels?

We offer everything needed to completely label and sign your warehouse distribution center including expert consultation to make sure that you have the right material and barcode specifications to fit the scanning equipment you are using.

Our sign production operations can produce any custom sign required including hanging bulk storage signs, end of aisle signs, dock door signs and more. Of course we are available to fully consult with your project manager to make sure you have the perfect sign for the job.

Find out why our customers tell us:

**"Choosing Pacific Barcode as a partner is like having a label and barcode expert as part of your staff!"**



### CORE VALUES

Customer Centric  
Integrity  
Consistent Reliable Quality  
Innovative Solutions Provider  
Community Involvement

### CORE FOCUS

**Passion:**  
Great Company, Great People,  
Great Products, Great Results

**Niche:**  
Providing the Best Labeling  
Solutions for our Customers

Find us on these  
Social Networking Sites



Get a fast price quote



Join Our Mailing List

# LPN Labels



- ✓ Fast and Accurate LPN Printing
- ✓ Variety of Stock and Custom Sizes
- ✓ Singles, Fanfold or Rolls
- ✓ Let us manage your database and create a delivery schedule so you never run out

### Single Labels

LPN - White Background



LPN - Color Background



LPN - Color Bar



### Two Labels

Twin Labels - Two of the same label side by side



Dual Labels - For Corner Wrap



**Because these are such mission-critical items for your warehouse facility, Pacific Barcode can work with you to establish delivery schedules so you will always have LPN labels on hand.**

**We can provide a free database management service ensuring that numbers are never duplicated.**